

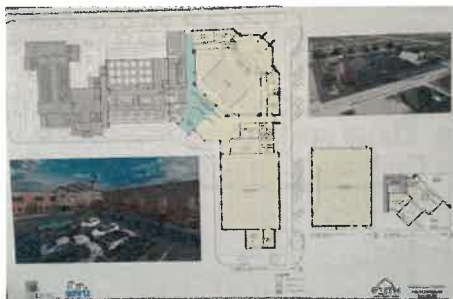
# Faith Matters

April 2024

## Pastors' Page



Back in 2006, Faith Lutheran had a decision to make. Our current buildings then—Faith on Main, Faith on Grove, and Faith North (the old Hope Center)—were not adequately serving our needs or accommodating growth. After going back and forth, and discussing all sorts of options, it was decided to tear down the old north education and office wing and Faith North, sell Faith on Grove, and build a new education and office space, a new large fellowship hall, and a new sanctuary. As you know, due to the cost, we decided to divide that project in half, and saved the sanctuary and fellowship hall until later.



It's later.

It's time.

First of all, Phase I—the education and office space—has been a huge success. Every last corner of it is used on a regular, weekly basis. From the youth space, to the Sunday school space, to the Foundation worship space, to the Faith Center (and the office space, and the music space, and the...), it has all been well used and appreciated. And it helped lead to immediate growth! Since its dedication in 2010, Faith has added 760 new members, plus many who participate without joining! Phase I has been a blessing!

Now, once again, Faith Lutheran has a decision to make. Once again, our building is not accommodating growth. While our space is adequate for some of our current ministry needs, it may not be for much longer. Our Director of Children's and Family Ministry, Laura, estimates that more Sunday school classrooms will be needed soon. The Friday morning women's Bible study is unable to fit any more ladies into their space. The Faith Center finds itself maxed-out during certain events and the Foundation worship is often full, to say nothing of accessibility needs.



335 Main St. S.  
Hutchinson, MN 55350  
Phone: 320-587-2093  
Email: office@faithlc.com

LIVE TV BROADCAST  
SUNDAYS AT 8 A.M.  
NUVERA & MEDIACOM  
ON CH. 7

PRE-RECORDED BROADCASTS  
SUNDAYS 10 A.M.  
AND 5 P.M.  
TUESDAYS 5 P.M.  
THURSDAYS 10 P.M.  
NUVERA CH. 10  
MEDIACOM CH. 8

RADIO BROADCAST  
SUNDAYS 8 A.M.  
KDUZ 1260 AM  
(PRE-RECORDED)

YOUTUBE SERVICE RECORDINGS  
POSTED SUNDAY  
AFTERNOONS

YouTube



### Inside this issue:

Stump the Pastor	2
Missions	3
Seniors Scene and Support Groups	4
Children and Youth Info Calendar	Insert
Adult Education	5
Finances and Faith Lutheran Women	6
Staff Directory Prayer Requests	7

Continued on page 2

## Pastor's Page continued from pg. 1



It's time to finish what we started back in 2006. That's why the church council authorized the formation of a Phase II Building Committee (P2BC), and that's why we reengaged our Phase I architects, Zerr Berg. I hope you were able to hear about the Phase II plans at the Annual Meeting in January. If not, I hope you were able to stop at one of the displays located around the church in late March. We're excited about the plans! At the same time, there is definitely a sticker shock! It's going to cost a lot of money—much more than if we'd done the whole thing back in 2010. But it's a worthy investment, because we're *Building Faith*.

Perhaps you remember that phrase from our Phase I project? (I hope you do, because it still serves as our church's mission statement!). As we explore a

new building phase, we're thinking intentionally about *Building Faith* again—not just a building, but building and nurturing faith in Jesus!

This is just a bit about why we need to launch a new building project, but there's a lot more. **We invite you—no, highly encourage you—in fact, we're asking you: join us either April 7 or 14 in the sanctuary at 9:10 a.m. for a Building Faith Presentation.** Those are two opportunities to come and hear why we need this new space, what our vision for it is, and what God might do with it.

Let's build Faith together!

See you in church (and at the meeting),

Pastor Dave

## Stump the Pastor

**STUMP  
THE  
PASTOR**

*Q: Where in the Bible does it say that Jesus went to hell?*

*A: That phrase from the Apostles' Creed is not stated in the Bible exactly that way and it was not in the oldest forms of the creed, either. It first appears in the 4<sup>th</sup> century as the Latin phrase *ad inferna* (or *ad inferos*), "to the inferno." It refers to the place of the dead (Sheol in the Old Testament and Hades in the New Testament), and some translations of the Apostles' Creed read "he descended to the dead," rather than "he descended into hell." At the time*

*of the Reformation, however, *ad inferna* was widely understood as a reference to hell and the Lutheran Confessions purposefully retained that translation.*

The idea behind the phrase is in I Peter 3:18-19. Christ "was put to death in the flesh, but made alive in the spirit, in which also he went and made a proclamation to the spirits in prison, who in former times did not obey..." The phrases "spirits in prison" and "in former times" suggests people who have died and remain subject to the power of death. When God raised Jesus from the dead, the power of death was broken, so Jesus went "in the spirit" to proclaim that victory to the dead. Exactly how and when that happened "cannot be comprehended by reason or understanding, but must be grasped alone by faith." (*Epitome IX, Formula of Concord*)

The crucial issue in this phrase is to hear it not as Jesus' condemnation by God, but that Jesus, having been forsaken by God the Father on the cross and restored again to Him in the resurrection, now proclaims repentance and forgiveness of sin to those held in bondage to death. It was the first leg of Christ's victory tour as the crucified and risen Savior of the world.



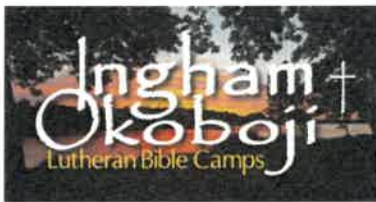
## Hearts Crying Out to God: Worship First, Witness Follows Report from Katie Weikle and Pastor Paul Knudson

Impassioned witness comes from unexpected folk, as reported to Pastor Paul from our own Katie Weikle, via Youth with a Mission (YWAM). It is a joy to hear Katie (daughter of Owen and Maria) share some of her experiences as a leader of YWAM through a training site in Nuremberg, Germany.

One very special experience Katie reported is a conference they held in Nuremberg recently with what may strike us as unlikely people. Iranians, Farsi-speakers, were invited to a weekend conference of those from Farsi-speaking folk in Nuremberg, who have been or want to be witnesses to other Farsi-speakers. Some 35 showed up and made known the passion they have for Christ and bearing witness to Him to others there and back in their challenging home countries. Katie noted that their hearts

“seemed to cry out to God” to bear witness in some of the hardest places for witness to be shared. Witness rarely or never happens unless hearts are touched deeply. It is a joy to hear of hearts moved to bear such witness.

Katie also shared of a time of training some YWAM leaders in a Nuremberg suburb. We too often think of Europe as a wasteland for Christian witness. Katie and others from their training center responded to the call to work with youth and adults in this congregation. It was a wonderful experience with youth from the congregation choosing to come into the Nuremberg center for more training. Our Lord is risen and keeps coming to his people to move them to prepare and carry out witness.



### Camperships Needed

Would you, could you, consider supporting our children and youth to attend Bible Camp this summer? In the past, Faith Lutheran has helped to send children to Ingham-Okobojo Lutheran Bible Camp and we hope to be able to do so again this summer. Help make this experience possible by donating to camp scholarships. Outdoor ministry is a unique experience that helps children grow deeper in their faith. Will you help make that possible for a child who may not otherwise be able to go?



### Mount Carmel Opportunity for 50% Off Camp Week

Mount Carmel has offered an opportunity to win a 50% discount for any Family or Eldersiversity Camp this summer. Please contact the church office to find out how you can apply immediately. The drawing is April 6.



### Orphan Grain Train Delivery

On March 15, members of Faith Lutheran made a delivery to Orphan Grain Train that included: 24 book bags, 211 T-shirts, 150 pillowcase dresses, and 85 quilts.

Thank you to those who drove the items to OGT, to the hands that made these items, and to those who donated material for all of these items.

You are a blessing to your neighbors both near and far.

## Seniors Scene



I've been wondering if spring will seem like spring this year. The temperatures have been so "spring-like" all winter that we won't know the difference. People are reporting trees and plants springing to life, and hoping we don't have a hard freeze to destroy them. I'm hoping we have some good rains for planting season. Oh, yes...and for gardens and lawn flowers and plants.

I've already received my Jungs seed catalog. I guess those people know our appetites for spring and planting are awakened by seeing all the luscious lawn and garden plants in full bloom...in pictures, that is.

Speaking of which, our April Seniors' Potluck program is about "Spring Gardening." Linda McGraw, who probably hungers for spring planting more than most of us with her knowledge of the same, will be our speaker. If you ever saw her yard between here and Buffalo Lake, you know what I mean. (They have since moved.)

Please come with your questions on how to improve your own skills for gardening, and how to beautify your yard or fill your plates with fresh veggies. **Seniors' Potluck** meets on **Thursday, April 25**, beginning with our potluck dinner at **12:00 noon**.

*"See you at Seniors Potluck!!"*

## Second Annual Messiah Concert



The second annual *Handel's Messiah* Concert will be held on Sunday, May 5, at 3 p.m. at Christ the King Lutheran Church. A free will offering will be collected to support local music programs.

This concert includes choir members from both churches as well as other community members. If you enjoyed last year's concert, you will want to return this year and hear some new pieces. Make sure to save the date on your calendar now!



## Faith Lutheran Church Support Groups

We are truly blessed with wonderful pastoral care efforts here at Faith Lutheran! People come together and, by faith and God's grace, they are helped.

We have a number of books and resources used by support group participants. If you are interested in checking out a group or the material, or if you want to help offset the book costs for others, please reach out to Pastor Paulus Pilgrim, Marsha Schmit, or Jeff Amundson.

### Grief Group

For anyone who struggles with the loneliness and emptiness brought on by loss, perhaps of a loved one in death, or divorce, or any kind of deprivation, we are offering a four-session Grief Support Series. This group will meet at 4:00 p.m. on **April 4 and 11, and May 2 and 9**. For members or others in need of a confidential setting to resolve grief issues. For questions see Marsha Schmit or Pastor Paulus Pilgrim.

**Grief Support  
Group**



### FACe Cancer Support Group

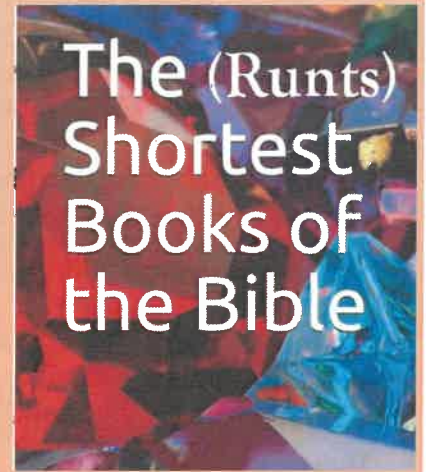
If you know someone who has cancer or is a caregiver, please invite them to attend a "FACe" session on the second and fourth Thursdays each month at 10 a.m. We are a growing group and can help to lighten the journey. Meeting in the third-floor conference room. E-mail Jeff at [jeffa@faithlc.com](mailto:jeffa@faithlc.com) with questions or for more information.



**“Faith Seeks Understanding”**  
 Continuing Learning Opportunities for Adults  
 Digging Deeper sessions are held between services  
 on Sunday mornings at 9:15 a.m.

**The Runts: The Shortest Books of the Bible**

It’s easy to overlook the little guys. The Bible is full of wonderful writing, and compelling subject matter. From Romans to Isaiah, Genesis to Luke, Psalms to Galatians, the educational possibilities are endless! And because of that, brief books like Haggai, Obadiah, Philemon, II and III John, and Jude often get passed by for something lengthier. Most of those books are only a chapter long! This class will give these short books the attention they’re due. We’ll examine one book each session and explore the general circumstances and message of each. Join us in the Faith Center at 9:15 a.m. beginning April 14.



WELLS OF  
**TRUTH**

THE GOSPEL

FAITH	GROUPS
BUILDING FAITH TOGETHER	<ul style="list-style-type: none"> <li>• Sharing</li> <li>• Growing</li> <li>• Serving</li> </ul>

**Join a Spring Faith Group!**

This spring we’ll be using a series developed by a partner-congregation in the LCMC, called *Wells of Truth: The Gospel*. This series delves deeply into foundational truths which we believe and vaguely know, but need to wrestle with in order to understand, and express more coherently. Through videos and small group discussion, the series will help us grasp, ponder, and articulate the good news of Jesus. We pray for the transformational power of God to make our “hearts burn within us” as we resolve to connect more powerfully with the Gospel.

Faith Groups are open to everyone! You can join a pre-existing group or start a group of your own. They are easy to lead and participate in! We will also, once again, be hosting Tuesday Faith Group Night at church. Come at 5:15 p.m. to enjoy a meal, watch the video together, and then break out into several smaller Faith Groups for discussion. Childcare is provided for the Tuesday night groups. For more information, contact Marsha Schmit by e-mail at [marshas@faithlc.com](mailto:marshas@faithlc.com).

**New Member Orientation**

The spring New Member Orientation classes will be held Sunday mornings on April 7, 14, and 21 at 9:15 a.m. during the education hour. If you or someone you know is interested in joining Faith Lutheran, please contact Marsha at 587-2093 or [marshas@faithlc.com](mailto:marshas@faithlc.com) for more details.



## Stewardship Matters

Stewardship  
*A way of living*

In 2023, giving to Faith's General Fund ended up exceeding expenses, but fully 25% of that total was given in the month of December. In light of that, Faith's leaders have urged the congregation to move some of that giving earlier in the year to avoid digging such a deep financial hole before year's end.

How is it going so far in 2024? Through January and February, gifts to the General Fund are 0.92% higher than in 2023. **Thank you for your faithful support!** Even those generous gifts, however, have fallen short of budgeted expenses by \$14,500. Blessedly, the church has enough reserves to cover deficits like that for the time being, but we do encourage you to continue giving in proportion to how God first blesses you to do so. Your faithful offerings make it possible for Faith Lutheran to pursue all the vital ministry that is happening here.

## News from the Faith Lutheran Church Women

**The Annual Rummage Sale** is almost here and lots of help is needed!

- \* **Table set-up** and prep will be right after church on Sunday, April 14.
- \* **Donations** will be accepted April 15-16 from 8 a.m.-5 p.m. & April 17 from 8 a.m. -3:30 p.m. *Please do not bring TV's, computers, large exercise equipment, car seats, appliances, or couches.*
- \* **The sale** will run April 18, from 8 a.m. - 7 p.m., and April 19, from 8 a.m.- 6 p.m. A \$5 bag sale will begin at 4 p.m. on April 19.
- \* **Help with clean-up** is needed on April 20, time TBD.



If are able to help in any way, even for an hour or two, please reach out to Bobbi Knudson at 320-455-7208 and let her know about your availability.

**May Day Baskets and Mother's Day Cards:** Come to Faith on Saturday, April 27, from 10 a.m. to 2 p.m. We will be making May Day Baskets and Mother's Day cards. Everything needed to make a basket, card, or both, will be supplied. Registration is required to ensure we have enough supplies for everyone. We will meet on the third-floor in the kitchenette. Please bring a snack to share and your own beverage. There is a sign-up sheet in the church office reception area or you may register by leaving a message on the Faith Lutheran Church Women Hutchinson MN group on Facebook. A free will offering will be accepted to help with supply costs.

**Mugs and Muffins: Girls and women of all ages** ~ you won't want to miss the May Mugs and Muffins. Courtney Corrente, one of our FLInterns, will be the speaker for this event. Come join us on May 4, at 9:30 a.m. in the Faith Center.

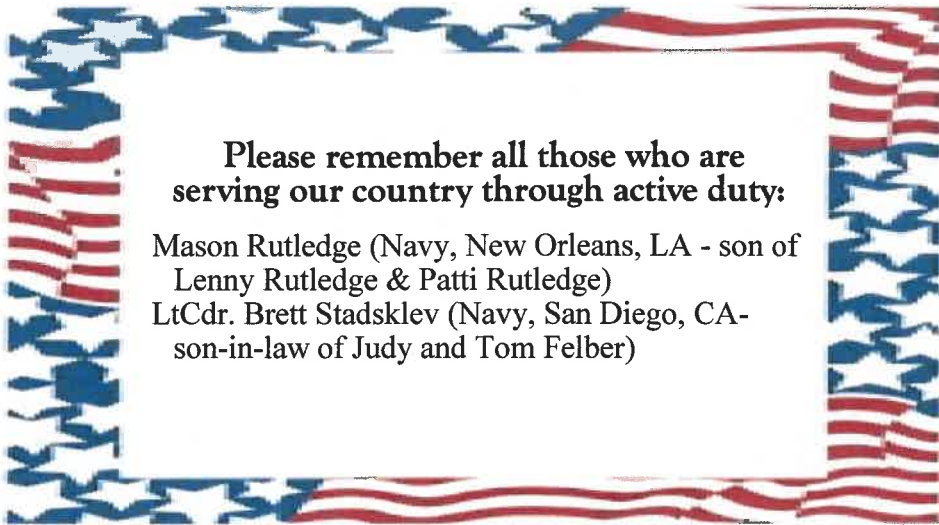
*Hi Faith Ladies! Courtney Corrente, here, and I am so excited to join you for Mugs & Muffins on May 4! I will be speaking about my few years working in ministry and what God has taught me through it all. I look forward to seeing you there!*



**Church Cookbook:** We are looking for your favorite recipes in the following categories: Appetizers & Beverages, Soups & Salads, Vegetables & Side Dishes, Main Dishes, Breads & Rolls, Cakes & Desserts, Bars, Cookies & Candy, This & That, Air Fryer, Instapot, Crockpot & Freezer Meals, Cooking for One, Recipes from our church youth, Barbecue, Grilling & Smoking, Holiday Meal Menus, Healthy Eats. Recipes may be submitted to [Flcwcookbook25@gmail.com](mailto:Flcwcookbook25@gmail.com), or dropped off at the church office. The deadline for submitting recipes is September 30. If you have a favorite family recipe that holds a memory, feel free to include a little story that we may include with the recipe. The goal is to have cookbooks available in time to purchase as Christmas gifts.

**Garden Tour/Salad Luncheon:** The FLCW is considering bringing this event back this year, but first they need a list of beautiful gardens to tour. If you have a garden, or know someone who does, and would be interested in hosting a tour, please send an e-mail to [faithlutheranchurchwomen@gmail.com](mailto:faithlutheranchurchwomen@gmail.com).

# Please Remember in Prayer



**Please remember all those who are serving our country through active duty:**

Mason Rutledge (Navy, New Orleans, LA - son of Lenny Rutledge & Patti Rutledge)  
 LtCdr. Brett Stadskev (Navy, San Diego, CA - son-in-law of Judy and Tom Felber)



**Remember our Faith members in nursing homes and health care centers:**

## Faith Lutheran Church INFORMATION & STAFF DIRECTORY

335 Main St. S. 320-587-2093 FaithLC.com

### Pastors

Scott Grorud	320-587-0171 (home)	scottg@faithlc.com
Dave Wollan	320-583-2385 (cell)	davidw@faithlc.com
Paul Knudson, Missions Ministry	320-587-2227 (home)	paulk@faithlc.com
Paulus Pilgrim, Visitation	320-234-9753 (home)	paulusp@faithlc.com

### Staff

Jeff Amundson, Pastoral Associate	320-587-2093 (office)	jeffa@faithlc.com
Marsha Schmit, Director of Pastoral Care & Evangelism		marshas@faithlc.com
Austin Willhite, Director of Music & Worship		austinw@faithlc.com
Kristen Durst, Director of Youth & Family Ministry		kristenm@faithlc.com
Laura Stowman, Director of Children & Family Ministry		lauras@faithlc.com
Wendy Magruder, Administrative Assistant		wendym@faithlc.com
Sara Wegner, Finance Coordinator		finco@faithlc.com
Owen Weikle, Custodial Services Coordinator		320-587-2093
Erika Smith, Nursery Attendant		

### Buffalo Lake Nursing Home

Kathy Fabel

### Cedar Crest - Silver Lake

Patricia Lambert

### Cokato Nursing Home

Clara Betker

### Harmony River

Ray Krueger

### Oaks

Phyllis Blum

Alice Poshek

### Pines

Elaine Blade

Frances Olson

Maynard and Shirley Holtz

### Woodstone

Dodie Fenske

Cyndy Ollrich

# Children, Youth, and Family Ministry Dates



## Sunday School

Sunday School children are learning about sin and forgiveness by studying Joseph from the book of Genesis and the Apostle Paul from the New Testament.

## B23

Join other families with children birth—3 years old in the nursery for a teaching and small group time. We will meet on April 21 from 9:15 a.m.—9:50 a.m..

## 56er's

Never too late to join 56er's! Any 5th and 6th grade student can join any time of the year.

## Great Start

The next Great Starts are on April 3 and May 1 from 7:45 a.m.—10:20 a.m.. If you are interested in volunteering, please contact Laura Stowman.

## Summer Registrations Open!

**Vacation Bible School** is for children who have completed Preschool—4th grade. This year it will be held at Faith Lutheran Church on June 24 –27 from 9 a.m.—noon.



**Day Camp** is for children who have completed Kindergarten—5th grade. This year it will be held at Christ the King Lutheran Church August 5—8 from 9 a.m.—2 p.m. Registration is now open via the QR code above and on the church website.

## Questions?

If you have questions about programs for children birth through 6<sup>th</sup> grade, please contact Laura Stowman, Director of Children and Family Ministry.

If you have questions about programs for 7<sup>th</sup> grade through young adult, please contact Kristen Durst, Director of Youth and Family Ministry.



## Confirmation

**Mentor Meeting**—Wednesday, April 17.

## FLY Night

Faith Lutheran Youth night continues for all high school students on Wednesdays from 7:00—9:30 p.m.

## Young Adult Night

Tuesdays at Christ the King or Faith Lutheran 6:30 p.m.—8:30 p.m. Come for a meal, fellowship, Bible study, and intentional young adult community. For young adults 18-30 years old.

## HAY Unity—Homelessness

Join us on Wednesday, April 17 for a night on homelessness presented by Hutchinson Area Youth Ministries. 6:00 pm—8:00 p.m. @ Riverside Church.

## Power House

Friday, April 19 from 7:00 p.m. - 10 p.m.

\$5/person, for 6<sup>th</sup>—8<sup>th</sup> graders.

Come for a night of games, pizza, and fun! Sign up by Friday, April 12, to secure your spot. You can sign up on the website or contact Kristen or Laura for more information.





## **SEEN**

The Flinterns and I have been reading through a book I picked up at a conference in 2022. I had sat in on a session on mental health, was immediately intrigued by the topic and bought the book. But as is normally the case, the book had sat idle for over a year and a half before I decided to read through it with the interns. *Seen* by Will Hutcherson and Chinwé Williams is a book focusing on how to heal despair and anxiety in kids and teens through the power of connection.

The authors shared some alarming statistics in their book. For example, “The highest rate of increase in suicide among all age groups is in kids between 10 –14 years old.” That is the overlap between Laura’s and my ministries. Late elementary through middle school has the highest rate. Another alarming statistic the book presented is that “1 out of 4 young adults has contemplated suicide.” 25% of young people! It then proceeds to present on how young people need to feel seen for who they are, and for adults to help and walk with them through their struggles. The book presents five ideas on how to help our young people feel seen: “show up, see them, just listen, speak life, and build grit.” As spring draws near, a lot of our young people begin to be excited for summer. But there are many kids who miss the routine of school causing their mental health to spiral. So how do we walk with our young people and support them?

**SHOW UP**—Make plans with your kids or young people in your life. Go to their activities and be present.

**SEE THEM**—Validate and support

**JUST LISTEN**—Don’t quickly jump to fix their problems but actively listen and support them

**SPEAK LIFE**—Bring truth to them and remind them that they have a God who loves them!

**BUILD GRIT**—Help teach skills that help cope when they feel low and challenge them to become adaptable.

But know in all things that we are here to support you in everything and anything you need!

Kristen Durst, Director of Youth and Family Ministries

Laura Stowman, Director of Children and Family Ministries

Faith Lutheran Church  
335 Main Street South  
Hutchinson, Minnesota 55350

Non-Profit  
US POSTAGE PAID  
Hutchinson MN  
Permit No 5

**ADDRESS SERVICE REQUESTED**

Put mailing label here



OUR MISSION IS:  
**BUILDING FAITH**  
*"EQUIP THE SAINTS FOR THE WORK OF MINISTRY,  
FOR BUILDING UP THE BODY OF CHRIST"*  
*EPHESIANS 4:12*



TO LIVE OUT THAT MISSION, GOD CALLS US TO:  
**FOLLOW JESUS**  
**ANNOUNCE THE GOSPEL**  
**INVITE ALL PEOPLE**  
**TEACH CHRISTIAN TRUTH**  
**HELP ALL WHO ARE IN NEED**